



# NEWSLETTER

FEBRUARY 2018

HAPPY VALENTINE'S DAY

**FEATURED ARTISTS**

Marilee Ford  
Sharon Feissel

**SPOTLIGHT ON**

Brian Cluer  
Janet McBeen  
Lucia Antonelli

\* \*

**GALLERY OFFERINGS**

Paintings  
Mixed Media  
Photography  
Ceramics  
Sculpture  
Woodcraft  
Sculptural Lamps  
Greeting Cards

**FIND US/FRIEND US  
ON FACEBOOK**

[www.riverfrontartgallery.com](http://www.riverfrontartgallery.com)

(707) 775-4278

**THE GALLERY'S WINTER SHOW  
THROUGH MARCH 4, 2018**

**SECOND SATURDAY ART WALK  
FEBRUARY 10, 5:00 - 8:00**

*HAPPY VALENTINE'S DAY  
to all of our visitors, customers, and artists!*

**Art As A Token Of Love**

**Gave my love a valentine.  
Got a smile and "That's real fine."**

**Gave my love a painting too.  
Got a dance step that was new.**

**Gave my love a photograph.  
Got a smile and delighted laugh.**

**Then I got a great gift too!  
My love said, "Dear, I sure love you!"**

**FEATURED ARTISTS: MARILEE FORD & SHARON FEISSEL**  
*Heaven, Earth & The Space Between*

The January newsletter discussed the “Heaven” and the “Space Between” portions of this two-person featured show. Now we turn to examples of the “Earth” portion.

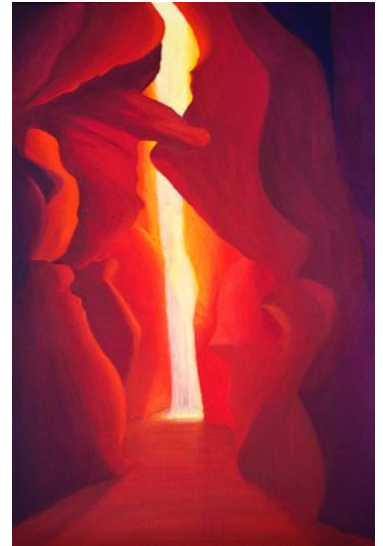


In *Father Bristlecone* (top left), with great beauty and skill, Marilee Ford gives us a rendition in oils of an ancient, twisted, still-surviving bristlecone pine in its barren, high-elevation habitat. With equal artistic aplomb, in *Morning Has Broken* (center left), she uses watercolors to splash light and color upon the landscape, waking the



waterfowl to another day. Her watercolor, *Traveling Between Worlds* (lower left) presents us with a bit of a mystery and tells a story she allows us to write. In her acrylic *Watery World* (bottom left), we see Marilee’s skill in presenting reality in abstract form.

In the “Earth” portion of her show, Sharon Feissel is focusing on Earth as our home with a collection of works, mostly 8’ x 10’ in size. Some are sale priced. Over all, her show spans quite a range of subjects, from the reality of a slot canyon (painted from her own photograph) to stylized reality, and fully abstract works.



In fact, both artists have employed multiple techniques and mediums so that the show offers oils, acrylics, watercolors, encaustic, mixed-media, and photomontage works.



The show runs through March 4th. Marilee and Sharon hope you enjoy the diversity of methods and subjects in this show and that you see something that really delights your eye!



The Second Saturday Art Walk on February 10 would be a great time for a visit.



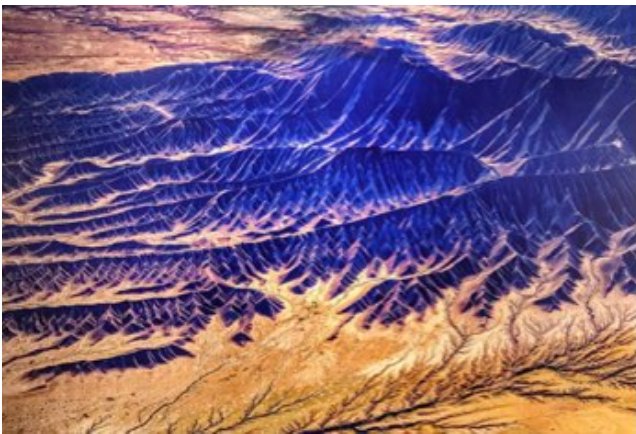


## SPOTLIGHT ON THREE INVITATIONAL ARTISTS

### Photographer Brian Cluer

Brian Cluer is a river scientist who's area of expertise is the formation of landscapes by rivers carving and depositing sediment. He is the senior Earth Scientist for NOAA's National Marine Fisheries Service West Coast Region, where he directs studies into dam removal, floodplain re-connection, and effective geomorphic process restoration for Pacific salmon. He is also a pilot.

Brian employs photography as a tool in his professional work among nature and the environment he values so deeply. He says, "My art captures nature through the eyes of an earth scientist. I often use aerial photography to gain a larger perspective on the landscape, as I did with *Geologic Boundaries* (below). It offers views not readily seen by most people." Brian also supplies aerial images to Over Flight Stock for use in magazines, advertising, etc.



Another keen interest is wildlife, both of the USA and of Africa. In *Majesty* (below) he gives us a group of elusive pronghorns at cloud level.



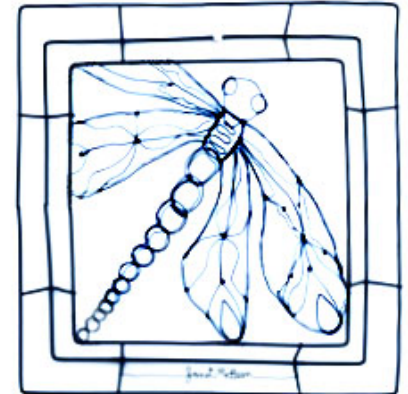
Brian comments, "I also strive to capture significant earth events, such as the 2017 total eclipse (right). I call the image *142 Minutes*. It is currently on view in the gallery."

Don't miss Brian's stunning photography, also now at Mac's Cafe & Deli in Santa Rosa.



### Janet McBeen, Wire Sculpture

Janet McBeen has mastered an unusual, although not unknown art form—creating sculptural images with wire. It has taken years to reach this level of proficiency. Her subjects are as different as the works seen here, *Gossamer Dragon* and the poignant *Please Don't Let Them Take Mi Padre*. Janet says of her early efforts, "In some ways my early attempts were the most intriguing. It felt as though I was in a dance with the wire, and I never quite knew who was leading. I pushed in one spot and the wire shot out in another spot. Like a disobedient dog, it escaped



Continued on page 4.



Janet McBeen from page 3.

my control and led me down roads I wouldn't have taken otherwise. I love the simplicity of line that the wire draws. I love the different thicknesses of wire, but most of all, I love the shadow image that the wire itself draws on the wall.

I create the wire drawing, then the wire creates a self-portrait as a delightful gift for giving it life."

### Painter Lucia Antonelli

Lucia Antonelli simply can't resist barns and the textures of old, weathered buildings. That is fortunate for the viewer, because Lucia is adept at creating a "stripped down", stylized painting with intense color. Yet, she still manages to deftly create the sense of wear and texture. For example, her oil painting *Donehue's Landing* (below). Lucia tells us, "The buildings are on Lakeville Highway. They are very worn and seem ready to fall. The image of these once-lived-in-and-useful structures add a charm to the existing landscape along the Petaluma River. Because there is nothing else around them, the structures stand out as beautiful worn sculptures against a hilly backdrop."



With *Silvio's Barn* and *Inside* (right), Lucia has painted Silvio Pincinottie's barn in a manner resembling low-light photos but has retained the locale's essential details and semblance of its textures, while evoking a very specific mood and sense of place.



Lest you think Lucia is a one-subject painter, let us quickly

point out that she not only covers a broad spectrum of stylized reality but also has a wonderful capacity to create abstract works based solely on her solid sense of color, form, and balance, as evidenced by *Boundless* (below).



Lucia is one of those fortunate artists who has been able to live from her art, beginning with her years as a jewelry designer. Through the decades she had wanted to paint, but only after serious illness in 2013 did she pick up the brush and open the tubes of paint. We are lucky that she did. Do come in and appreciate Lucia's special renditions of the details of this world.