



NOVEMBER 2016

**FEATURED ARTISTS:**

**Henry White  
Michael Riley**

**NEW MEMBER  
Vidya Narasimhan**

\* \*

**GALLERY OFFERINGS:**

**Paintings  
Mixed Media  
Photography  
Jewelry  
Pottery  
Sculpture  
Sculptural Lamps  
Woodcraft**

**FIND US/FRIEND US  
ON FACEBOOK**

[www.riverfrontartgallery.com](http://www.riverfrontartgallery.com)

(707) 775-4278

**THE GALLERY'S LATE FALL SHOW  
WEDNESDAY, NOVEMBER 9, TO SUNDAY, JANUARY 8**

**SHOW OPENING AND ART WALK RECEPTION  
SATURDAY, NOVEMBER 12, 5:00 - 9:00 PM  
Musical Interludes By Bob Johns**

**WITH THE ADVENT OF FALL**

Something in the air, some almost imperceptible change, tells us that, despite whatever Indian Summer may persist, Fall has begun. With the equinox on Sept. 20, the Earth was positioned on its orbit to give us an equal amount of day and night. Nature began to prepare for its long winter nap, with annuals dying back and leaves discarding their green camouflage and briefly showing us their true colors, as in Vidya Narasimhan's photo below of orange aspen leaves peeking through Sierra snow. Pumpkins are ubiquitous, and we can almost smell the turkey roasting and taste the tartness of cranberry sauce. By the solstice on Dec. 21st, we will have the shortest day of the year—right when we need time for gift shopping!

Regardless of the season, however, Riverfront artists have plenty to offer. With approximately 15 members and another 25 or so artists in the Invitational program, there are a variety of styles and techniques, and an impressive array of products, as listed on Gallery Offerings at left. In the December issue, we will highlight many works that make superb gifts—for your family members or for yourself. The warmth of the gifting season will surely make up for the chill in the air.

*A s p e n  
L e a v e s &  
S n o w*

Photograph  
by Vidya  
Narasimhan



## FEATURED ARTIST: PAINTER HENRY WHITE

### *Scenes From Sonoma County*

Thick-limbed, gnarly, majestic, old oaks, as in *La Cresta Oaks* (below bottom); sweeping vistas of undulating hills glowing golden in late afternoon sun, as in *Oh, Savanna* (below top); these are the mainstays of Henry White's featured collection in the Late Fall Show at Riverfront. These subjects should surprise nobody, since Henry is a well-regarded master painter of the local landscape. When Henry first moved to Sonoma County in the mid 1970s, he says, "With its beautiful hills and woodlands, I knew this was the place for me."

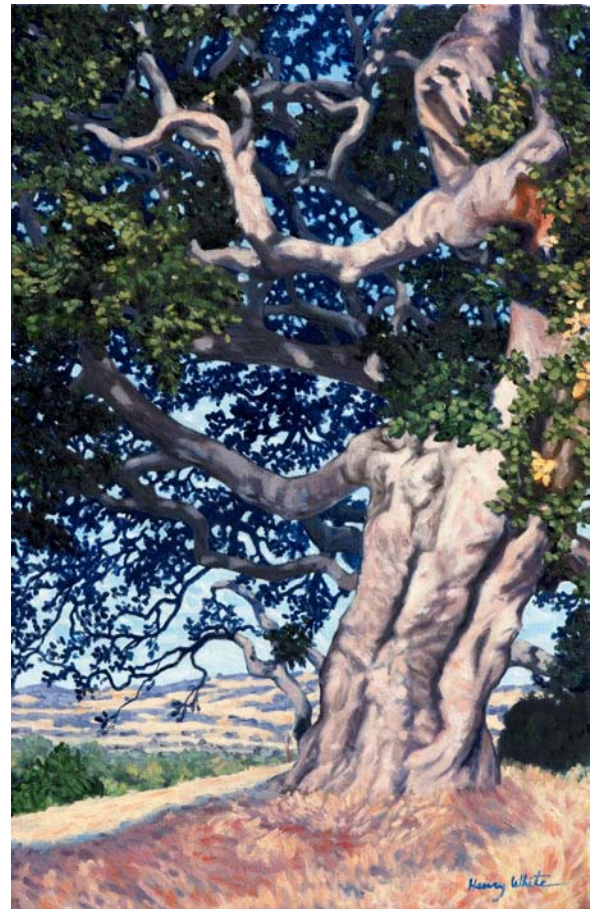
Henry has traversed much of the area on foot, camera in hand to document what he has seen. He is sensitive to the uniqueness of each tree and is passionate about recording many of them in his paintings. One such result is *Coast Live Oak* (below right). Henry comments, "I feel a sense of urgency in capturing the aspects of the trees and hills as they are now and before they deteriorate due to the

radical changes in their environment."

For this show, Henry also painted the landscape that he sees from his house, partially done *en plein air* and partially in his studio, using his customary oils. "I especially love the visual and tactile qualities of oil paint," he says.

Although he works in various mediums, from pen and ink to computer design and from portraiture and still lifes to commercial logos and cd covers, after all these years Henry is still partial to and inspired by the oak woodlands and golden hills.

Also well-known as a seasoned musician often performing at local venues, Henry sums up his artistic life, saying, "I have a deep and abiding impulse to create art and make music, my favorite forms of human expression. For me the impulse to create is like life and love. It is a quickening of the spirit and a rising joy."



## NEW MEMBER & FEATURED ARTIST: PHOTOGRAPHER MICHAEL RILEY

### *Landscapes And Reflections*

Petaluma's Mike Riley says he is a "well worn, substantially traveled photographer." His current show is proof positive of that, since his images are like pages in a travel magazine.

Travel isn't his only focus. He seeks out landscapes and wildlife, does still life and architectural images, and sometimes event photography as well.

While perfectly capable of giving viewers the straight photograph, Mike enjoys the creative freedom of interpreting his subjects in a more personal way. Of course, he begins this quest in the camera with choices made in composition, lighting angle, time of day, and lens selection, etc.

Once the digital information is transferred into his computer and the image emerges, he begins to develop the photograph according to his own vision and how he wants the viewer to experience the scene. He takes advantage of digital techniques that give him a broad scope for subject interpretation. "I will experiment with filters to try to generate an

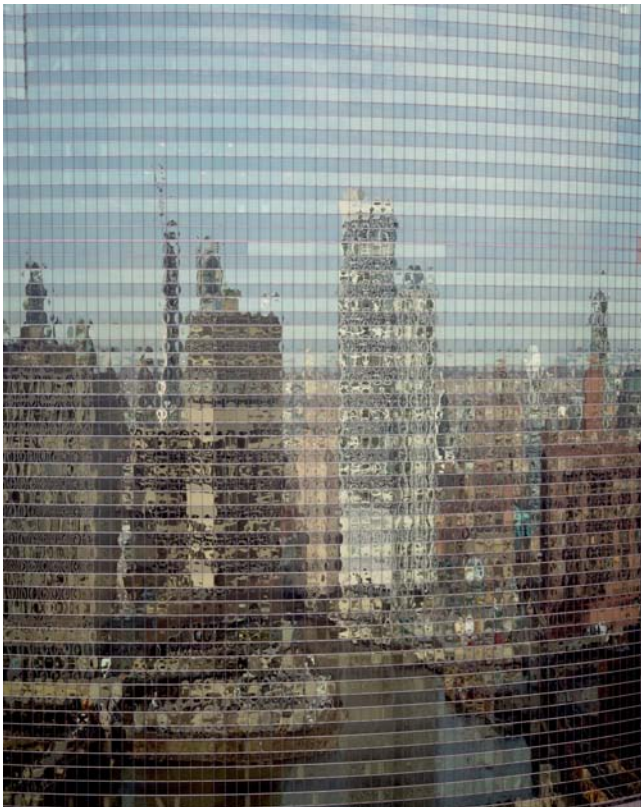
effect. The result often gives the impression of a drawing or painting. This creative effort is even more stimulating than the photography itself. This is where I really make the image mine," he explains.

Mike's featured show will be a blend of landscapes, such as *Moon Setting Over Tetons* (below right) and reflections, such as *Chicago Reflected* (below left). Viewers will find a mix of presentations from the usual prints on paper, to prints on canvas and on metal. "Especially for reflections," Mike explains, "I often opt to print on metal, as I think this tends to amplify the reflection effects."

Mike's skill in developing a personal vision of a scene is clear in the luminous adaptation he has made of *Moon Setting Over Tetons*. The image fairly glows as the moon shares the spotlight with and is balanced by the tinged snowcap of the mountain opposite it.

"Ultimately," Mike says, "I attempt to capture shots that express an emotion or an unusual view of a subject. The overall goal of my work is to produce things that are interesting and pleasant to look at. Hopefully, things that people would like to hang on a wall."

Mike is a new member of Riverfront Art Gallery. Visitors can meet Mike at the opening reception on Saturday, November 12, 5:00 to 9:00. His show will be on view through January 8, 2017.



## NEW MEMBER: PHOTOGRAPHER VIDYA NARASIMHAN

To gaze into Vidya Narasimhan's landscapes is to be transported instantly to a place of beauty. Vidya tells us, "Growing up in urban India, I was enamored by the photographs of the grand landscapes of the United States. My first brush with Yosemite National Park and the rugged coasts of Big Sur convinced me to move to California in order to have unfettered access to these spectacular landscapes." This fascination with grand landscapes resulted in Vidya becoming a full-time photographer.

She explains, "Photography is a vehicle to express my inner most sense of connection and spirituality to our majestic landscape. I scour national parks, state parks, and federal lands, not with the mere intention of recording iconic landmarks, but in the pursuit of providing an emotional link to these lands. This has led to an unending quest of not just the right light, but also the right conditions to provide a window into my feelings. I look to photograph the beauty in nature's purest elements – lands formed by the perseverance of forces of erosion, rivers gushing from snow melt,

flowers blooming at the onset of spring, trees shedding leaves in autumn, clouds threatening to create a storm, and snowcapped mountains reaching up to the skies. The unending cycle of life has created a passion that I cannot get enough of."

Beyond her skills as a photographer, Vidya has also become adept in print development, having been mentored by John Sexton and Charles Cramer. Vidya comments, "I believe that the ultimate manifestation of my art rests in the creation of expressive prints, interesting in detail, conveying a variety of moods, and glowing with intrinsic beauty. The prints are optimized for color, contrast, sharpness, and saturation using techniques similar to those employed in the traditional darkroom to ensure that the prints best reflect my artistic vision."

Whether rendered in color, as in *Valley of the Gods* (top left) or in black and white, as in *Storm Clouds & Seaside Cliffs* (bottom left), whether a close up detailing a small, intimate spot or a broad sweep of majestic landscape, Vidya's photographs convey her emotional reaction to the beauty before her, the beauty she offers to us as viewers. A lovely example of Vidya's "mood photography" is her *Clearing Storm, Three Brothers* (below).

Riverfront Art Gallery is delighted to welcome Vidya as a new gallery member and to have her very fine images among the gallery's offerings!

