



JANUARY, 2014

CALL FOR ENTRIES:
"SHOWIN' ON THE RIVER!"
JURIED PHOTOGRAPHY
SHOW

FEATURED ARTISTS

Polly Podolsky
Craig Melville

MEMBER NEWS

**

Gallery Offerings:

Paintings
Mixed Media
Photography
Photomontage
Sculpture
Woodcraft
Sculptural Lamps

FIND US/FRIEND US
ON FACEBOOK

www.riverfrontartgallery.com

(707) 775-4278

THE GALLERY'S WINTER SHOW

JANUARY 8 - MARCH 2

SHOW OPENING RECEPTION AND ART WALK
SATURDAY, JANUARY 11, 5:00 - 9:00 PM

Call for Entries:

"Showin' On The River!"

Riverfront Art Gallery's
Annual Juried Photography Show

Entry deadline: January 25

Hey, Photographers!

In the closet, under the bed, on a shelf, maybe on your walls, you have beautiful, interesting, creative photographs just languishing where nobody else sees them. A pity. Why not do something about that? For instance, you could enter Riverfront's Annual "Showin' On The River!" Juried Photography Show.

A panel of six will select the entries to be on display at the gallery during the Early Spring Show, running from March 5 through May 4. The entry deadline is Saturday, January 25. The guidelines and entry form are on the gallery's website. On the menu at left, click on Call for Entries under Contact Us. Then click on the photography show link for full, downloadable information.

The photography show is intended to showcase the breadth of what is being done in and with photography today. We encourage entrants to be creative and to push into new areas of photographic expression. Thus, a broad range of approaches will be considered.

Traditional and digital photography in black and white and color will undoubtedly form the bulk of the show. But infrared, alternate processes, pinhole camera work, and other less standard works certainly stand a chance in this competition. Photomontage and works created digitally are welcome as long as the final images are derived from the photographer's own photographs.

Let us see what you come up with!



Corn's Not The Only Thing That's Bored

**FEATURED ARTIST:
PAINTER POLLY PODOLSKY**

Somewhere In Time



Egbert Was All About the Sizzle

Norman Rockwell would love Polly Podolsky's paintings based on old-time photographs that she finds at flea markets, antique shops, and elsewhere. They picture a way of life that seems to have slipped through our grasp.

grimacing faces. Then there are those that are a delightful moment in time....like the poor kid who lost his ice cream or the young couple cooking at a campfire. The search is challenging, because I never use anything from magazines, that has been published or reprinted and sold in multiples....that would be too easy! Finding good material is like digging for gold...."



Always Take Time To Cool Your Toes



Oops!

Polly explains, "Much of my work is inspired by photos from the 1910s through 1940. These old photos excite my love of social history. I use only personal photos that have been discarded by families who no longer treasure them. That makes the search much more interesting. We have much in common with the people in those tattered snapshots...the future they looked toward is now our history. I find that both eerie and wonderful!"

Not only are Polly's subjects traditional, but her technique is traditional as well, one used by the great masters. Polly explains, "I start all my paintings the same way...either drawing or massing in the elements and then doing a complete value underpainting with washes of burnt umber. Then I pay a great deal of attention to the quality of the painted surface--nice juicy color and paint with real presence." Hers is art in the highest sense, rich in content, rich in quality, rich in its effect on a room.

Polly continues, "One of the enthralling things about working with old photographs is finding the ones that tell a story. There are bushels of old prints showing people standing rigidly, arms at sides, with



All Together Now



Harvest Homeboys

**FEATURED ARTIST:
PHOTOGRAPHER CRAIG MELVILLE**

Uncomfortable Darkness

Craig Melville has enjoyed considerable success with his series of elegant black and white photographs of the Golden Gate Bridge and with his photographs of the local landscape. However, for his new featured show, Craig has taken a bold step into art photography with a style of image more often seen in museum collections.



It's Only Me

Craig describes this new direction this way: “*Uncomfortable Darkness* is a self portrait series exploring life’s struggles and conquering our darkest moments. Heavy emotion lies within the body of work exploring the thresholds of life, our desire to love, and our resilient effort to find what we desire.”

The series blurs the lines between the mental space and physical world in a nearly cinematic fashion. Each photo tells a fraction of a story never to be fully told, leaving the blank pages to be filled by the viewer with their own experiences and dreams, or to leave it as is and just experience the moment.

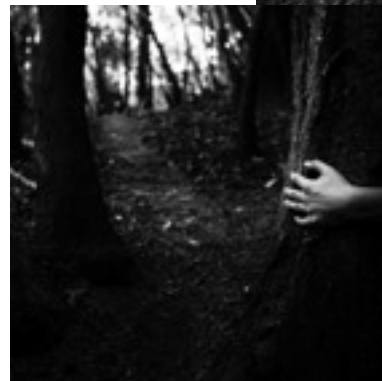
Craig says, “These are not self portraits as a reflection of myself but as an innuendo to the viewer to put themselves in place of the faceless figure and see what happens.”



Roads Traveled

Craig continues, “Using nature as the background and shadow as the mask, I have created my most profound work yet. This series marks a significant turning point in my creative style. Adding the human element has allowed concepts never imaginable with just what the landscape provides.”

The Wait



Taking Me

MEMBER NEWS

OUR PORTRAIT PAINTERS

Polly Podolsky

Being so skilled at rendering figures from yesteryear, it is no wonder that Polly is also a skilled portrait painter. "I leap at any chance I get to paint a portrait from life. I love that magic moment when I capture my model's personality and unique expression." She generally paints from family photo archives but does do live sittings as well. Contact her at: Polly Podolsky <paintyou@comcast.net>



Above: *Antonio* by Christine
Right: *Big Ed* by Polly



Christine Kierstead

If you want to have a beloved pet with you always, a pet portrait is just the answer--and Christine Kierstead is just the painter. Working from photographs, she has done numerous animal portraits, capturing the spirit of each animal, large or small. Contact her at: Christine Kierstead <csheeter@mac.com>

Gus & Sharon Feissel

are among artists showing at Redwood Cafe
8240 Old Redwood Highway, Cotati
January 14 - March 11
Meet the artists Sunday, January 26, 5-7 pm.
Gus is showing landscapes.
Sharon is showing photomontage works.



Zion
Sunset

Gus
Feissel

PROFESSIONAL INSTRUCTION IN PAINTING AND PHOTOGRAPHY

Polly Podolsky's Painting Classes

Polly is a painting instructor with the Petaluma Arts Center. She will be scheduled for their Spring session, so keep an eye out for their class announcements.

In the meantime, if you are interested in a more private setting, Polly holds classes in her studio, including giving private lessons. Polly says these are ongoing, so you can suit your own schedule. To make arrangements, contact her at: Polly Podolsky <paintyou@comcast.net>

Lance Kuehne's Photography Workshops

As many in the North Bay already know, gallery co-owner and photographer Lance Kuehne gives instructive workshops and photo tours not only locally but at other California venues. His upcoming schedule follows. For more information see Lance's website: lancekuehne.com and go to *Workshops*. This year's schedule includes a New Year's Day afternoon outing to start your photography year off right!

Jan. 1: afternoon outing

Jan. 18-24: Death Valley & Eastern Sierra

Feb. 9: wine country afternoon (noon to sunset)

Feb. 21-23: Wine Country Workshop

The image on Lance's calendar cover and his *Bowing to the Moon* image (both below) are examples of wine country scenes you might find.

The number of participants is limited to 8 people, so sign up quickly! Lance also gives individual lessons.



Lance Kuehne's 2014 calendar now available at the gallery, at Barnes & Noble and other local stores, on Amazon.com, and Calendars.com.