



OCTOBER, 2011

Guest Artists:

**Nirlap Bettenhauser
Mary Butler
Natasha Marquardt
Peter Travers**

**Workshop by
Kathleen Deyo**

Member News

**

Gallery Offerings:

**Acrylics
Mixed Media
Oils**

**Photography
Photomontage
Watercolors**

**FIND US/FRIEND US
ON FACEBOOK**

www.riverfrontartgallery.com

(707) 775-4278

THE GALLERY'S CURRENT SHOW

Through November 6, 2011

Art Walk Reception: Saturday, October 8, 4:00 PM - 8:00 PM

FALL AT THE GALLERY

Even in sunny California, leaves are slowly turning. The poison oak along wooded paths has already shown its intense scarlet. October is when the willows and aspens change into their Fall attire of bright yellows and oranges. Seen in the higher elevations and along streams, the aspen don't all change at once. In fact, any given location can be offering the artist, painter, photographer, and traveler everything from fully green, through yellow and orange, to completely bare branches. It's a lovely combination, worthy of a quick trip to let the "awe" of autumn sink into your consciousness.

At Riverfront Art Gallery, Fall means getting back to a more normal pace with artists returning from summer holidays, their family members back in school or returning to work, and routines being established once again. Travel is likely to have inspired some new work which will eventually make its way to gallery walls.

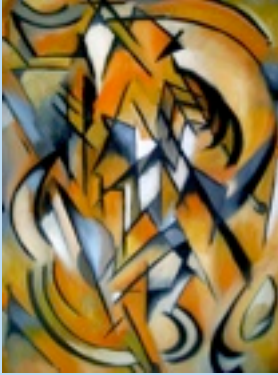
The Early Fall Show, which includes the four impressive artists presented on the following pages, runs through November 6. On November 9th, the Late Fall Show will kick off.

New members, guest artists, and new works by familiar gallery members make each show different from the prior one, providing ongoing reasons for catching each new exhibition. As life settles back into place after the more random activities of summer, we invite you to make a stop at Riverfront Art Gallery part of your Fall routine.

Shows change roughly every two months, with an opening reception for each new show and, except for mid-winter, Riverfront participates in Art Walk on the second Saturday each month.

The gallery and its members look forward to seeing you!

GUEST ARTIST: NIRLAP BETTENHAUSER

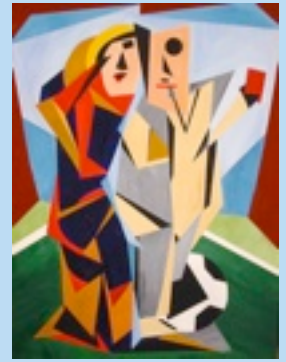


Cello Concerto

Whether rendering the rich tones of classical music (*Cello Concerto*), capturing an event from the 2006 Soccer World Cup (*Red Card Referee*), or depicting Parisian haute couture (*French Elegance*), Nirlap Bettenhauser draws upon both cubism and representational art as her preferred painting styles. She says that alternating between styles allows her to avoid one-dimensionality in her works.

Of her cubist works, she says, "I slice up space, create geometric and organic shapes, and assort them into pieces that are colorful, balanced, and interactive. With cubism, I attempt to give the viewer an alternate perspective that hits against pre-conceived and defined notions of subject matter."

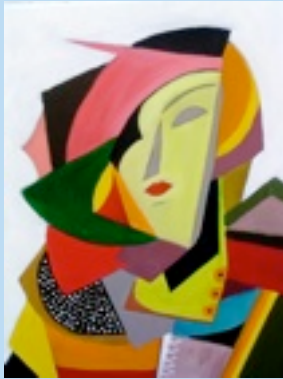
Regarding her World Cup paintings, Nirlap explains, "I thought it would be interesting to paint a popular sport in cubist style. Soccer players are given an honorary status--rather like "angels" flying up and down the field. Then an injury or red card suddenly changes them into a fallen angel. So these pieces are about the status we confer on soccer players and the prestige we bestow upon them. *Red Card Referee* relates to Zinedine Zidane who got a red card at the final game for head-butting an Italian player who insulted him."



Red Card Referee



Angelic Football

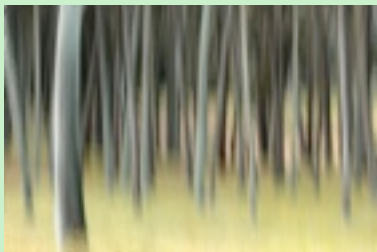


French Elegance

GUEST ARTIST: MARY MACEY BUTLER

Mary Macey Butler has 30 years of photographic experience behind her images. However, she has a painter's spirit in that she specializes in abstract and impressionistic images created through camera motion, photomontage, or technically-complex in-camera multiple exposures. The latter require Mary to set her camera to take up to ten shots that result in a single image. The exposure for each shot must be carefully determined, since the combined exposure of the ten shots must add up to what the proper exposure of a single shot would be. In addition, each shot is taken in a slightly different position than the prior shot. Surprisingly, in order to get gentle, poetic, impressionistic results, each individual image must be sharp and with good depth of field. In *Presidio Tree Impression #1*, Mary moved the camera incrementally upward. In *Fall Trees Impression*, she moved the camera randomly for a quite different effect.

To this and other specialty techniques, both in-camera and in digital development, Mary adds her love of straight photography that has a decidedly abstract bent, such as the graphic, visually-simplified works she shot in Cuba.



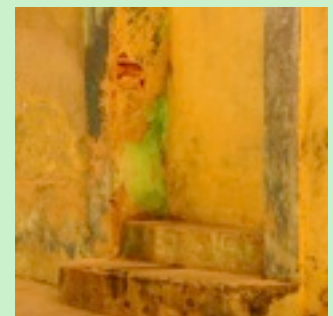
Presidio Tree Impression #1



Fall Trees Impression



Scene Along the Prado, Havana, Cuba



Wall Patina #4, Trinidad, Cuba

GUEST ARTIST: NATASHA MARQUARDT

Russian-born artist Natasha Marquardt was schooled in painting all through her academic years. Studies in traditional techniques of the great masters, as well as in lacquer art and egg tempera mediums led to her employment in St. Petersburg as a painter of icons and miniatures and as an expert in art restoration. However, her personal emphasis was on commissioned portraits.

With her grounding in egg tempera, a paint medium used in ancient Egypt and to create the luminous icons of the Byzantine Empire and as the preferred medium for religious art in the Greek and Russian Orthodox churches, Natasha has a deep appreciation of rich color tones. Even though she now works in oils and acrylics, the rich colors in Natasha's paintings are a contemporary link back through art history. The details in many of her works also remind the viewer of her accomplished specialty of painting miniatures.

Now living in Petaluma, Natasha brings her impressive skills to the beauty of our local landscapes and to Petaluma itself, while also continuing her love of portraiture, whether of people or their pets.



Timber Cove 1 (acrylic)



Downtown (oils)



Vineyard (oils)

GUEST ARTIST: PETER TRAVERS

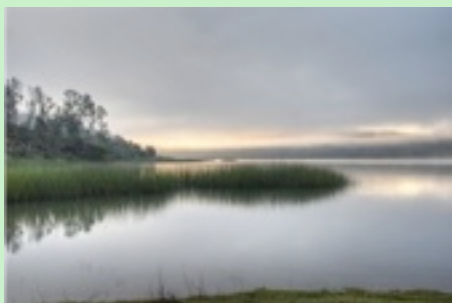
A graduate of Rhode Island School of Photography, Peter Travers has a preference for peaceful, relaxing landscapes with as much open space as possible. He is a master of moody and atmospheric scenes.

Peter says, "My approach is to seek out tranquil settings. I revisit my favorites again and again. I have a specific scene in mind, mother nature lights it. If the muse is right, I get a nice shot. My favorite photo is *The Cow*. I waited in early morning fog for the cow to move into my shot."

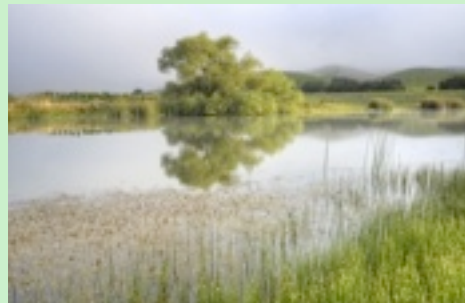
Peter's purpose is to convey through his photography a feeling of calmness and joy. He says, "I want you to walk into my photo and have fun."



The Cow



The Point



Vineyard Pond



Rolling Vines

WORKSHOP AT RIVERFRONT ART GALLERY

A trained seer and accomplished painter, Kathleen Deyo will present a ten-session workshop entitled "How to Read the Signs in Nature for Guidance!" Kathleen teaches you "to recognize synchronicity such as the flight of birds and totem animals for guidance. In this way we practice the presence of God and become attuned to the feeling of being dearly loved and keenly observed."

The workshop will be held at Riverfront Art Gallery for \$12 per session beginning on Tuesday night, Nov. 15, 7:30 to 8:45. Subsequent dates will be determined by availability of guests. Please call Kathleen's cell phone (877-523-4010) to RSVP and bring a friend.

For more information about Kathleen, please visit her websites: www.kathleenpsychic.com and www.kathleendeyo.com. Also see her at www.LeasingLuxuryPaintings.com.

MEMBER NEWS

CONGRATULATIONS, MARK!

Sonoma County artist and Riverfront Gallery member, Mark Lifvendahl, has been selected by the Sacramento Arts Council to be one of the participating artists for this year's annual Gala fundraiser. The fundraiser takes place on October 22 in Midtown Sacramento. For more info see: sacramentoartscouncil.org

AT SEBASTOPOL CENTER FOR THE ARTS

Stephanie Hamilton-Oravetz is participating in the new juried show, "Roots," at Sebastopol Center for the Arts. The show runs from September 15th to October 22nd.

Stephanie's interpretation of the theme includes "Life in the City I: Without Roots," showing the statement, "I CAN'T PREDICT THE FUTURE" in the window of an aging apartment building and "Art, Values, and the Roots of Evil" featuring close-up images of paper currencies from various places in the world.



Life in the City I: Without Roots



Art, Values, and the Roots of Evil

AT TOWERS GALLERY, CLOVERDALE

Five Riverfront members are showing at Towers Gallery in Cloverdale in the "Cruisin' at Towers Gallery" show through October 31. The "Cruisin'" theme is in conjunction with the 18th annual Cloverdale Car & Motorcycle Show, Cruise, and Sock Hop.

Jerrie Morago, Cathy Thomas, and Lance Kuehne are showing antique automobile photographs. Stephanie Hamilton-Oravetz and Frank Oravetz are showing Ducati motorcycle photographs.

Bill Hollister, also at Towers, is showing lovely photographs of lavender and other blossoms.

Car Dreamin' T-Bird

Jerrie Jerné



ALSO IN CLOVERDALE

Cathy Thomas has collage works at the Cloverdale Arts Alliance First Street Gallery.