



AUGUST, 2011

**“Beyond the Gallery”
Program for
Businesses**

**“Showin’ On The River!”
Juried Fine Art Show**

Member News

Towers Gallery

* *

Gallery Offerings:

Acrylics

Mixed Media

Oils

Photography

Photomontage

Watercolors

**FIND US/FRIEND US
ON FACEBOOK**

www.riverfrontartgallery.com

(707) 775-4278

CURRENT SHOW
Through September 11

Art Walk Reception: Saturday, August 13, 4:00 PM - 8:00 PM

“BEYOND THE GALLERY” PROGRAM

Over the past three years, Riverfront Art Gallery co-owner, Jerrie Jerné, has developed a program that serves gallery artists and the local business community more fully. Working with participating Petaluma businesses, Jerrie books the artwork of current and former gallery members into the business premises. The artwork remains on the walls for an agreed length of time. Businesses currently in the “Beyond the Gallery” program include:

*Cucina Paradiso, 115 Petaluma Blvd. N., currently showing local landscape photographs by Lance Kuehne and abstract paintings by Raphael Montique through August 22nd, followed by Nirlap Bettenhauser’s fine cubist works and Sharon Feissel’s “Mesa Magic” series.

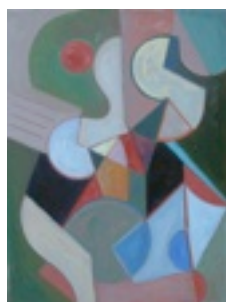
*Elliot James Hair Salon, 113 Washington St., featuring Jerrie Jerné’s “Window Displays from Around the World” through August 15th.

*J Solar, 119A Kentucky St., landscape paintings by Marilee Ford ending soon.

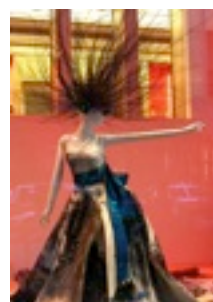
*Planet Beach, 151 Petaluma Blvd., Suite 137, *Magical Venice* photographs by Stephanie Hamilton-Oravetz and Jerrie Jerné through August 13 followed by “Window Displays” by Jerrie Jerné through September 13th.

*Viva Cocolat!, 110 Petaluma Blvd. N., “Food Fantasy”, paintings by Jan Brown, Christine Kierstead, and Karen Spratt through September 27th.

Shows change often, so watch for your favorite Riverfront artists “beyond the gallery.”



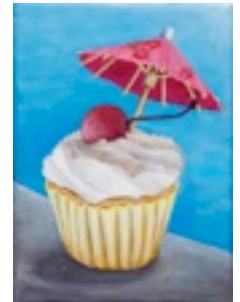
Raphael Montique



Jerrie Jerné



Sharon Feissel



Karen Spratt

CURRENT SHOW AT RIVERFRONT

One of the delights of a show with a large number of participants is the wonderful diversity that abounds in styles, subject matter, and media.

For example, Muriel Sutchter Knapp's whimsical *Mademoiselle Fi Fi* is a work of fiber art.

Kirk Hinshaw is a master at creating surrealistic images by collaging disparate images together to create something totally unexpected, as in *Flights of Fancy*.

Margaret Eldred's skilled pen and ink drawing and Cathryn Coffee's graphite works are beautiful black and white counterpoints to all of the color in the exhibition.

Two artists, Wayne Berger and Hobart Humphrey, have brought to this diverse collection the texture and color of metal. The patina in Ho's *Cupric Phenomenon* is due to the copper having weathered underground with the metal interacting with water and chemicals in the soil.

A highly unusual piece is Cheryl Thompson's *Poppy Field*, which features three-dimensional flowers extending out from the background.

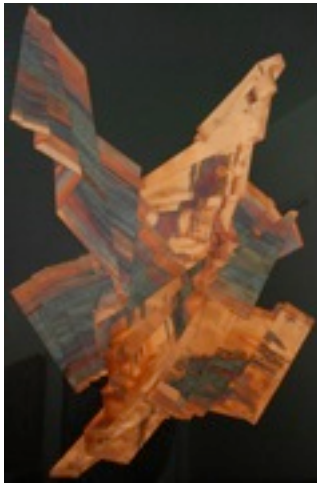
Of course, even within the more standard media of oil, acrylic, watercolor, and pastel there is considerable variety of subject and style. Karen Griswold's acrylic *Moonbow* is an unusual presentation of a textured quarter moon amid a textured atmosphere.

Shannon Abbey, with her rooster, *Farm Animal #6*, gets us eye-to-eye with the colorful rooster. And Jan Brown's *Strawberries* look like you could pick them right out of the bowl. Helen Mehl achieves wonderful textural effects in her doors pieces.

Come delight in this diversity of image and of talent. The show represents the work of 32 local artists who were accepted into the semi-annual "Showin' On The River!" juried fine art show.



Mademoiselle Fi Fi
Muriel Sutchter Knapp



Cupric Phenomenon
Hobart Humphrey



Strawberries
Jan Brown



Poppy Field
Cheryl Thompson



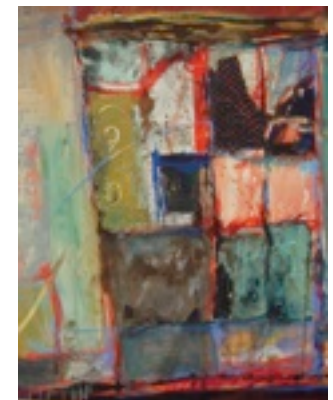
Church, Piragovo, Ukraine
Margaret Eldred



Moonbow
Karen Griswold



Flights of Fancy
Kirk Hinshaw



Antique Door
Helen Mehl



Farm Animal #6
Shannon Abbey

MEMBER NEWS

Stephanie Hamilton-Oravetz & Frank Oravetz

Stephanie and Frank, besides being at Riverfront, currently have work at Towers Gallery in Cloverdale. Frank is presenting images from Paris, while Stephanie offers grape leaf abstracts.

Stephanie is showing Carnival masks and other images from Venice at Planet Beach in Petaluma.

Masks are also the theme, but with closeups of the eyes, in a show Stephanie and Frank call, "It's All About the Eyes: Portraits of Carnival in Venice" at Sonoma Eyeworks, 534 Larkfield Shopping Center, Santa Rosa, through August 31st, 9:00-6:30.



The Bluest Eyes
Stephanie Hamilton-Oravetz



Grape Abstract III: Map of Desire
Stephanie Hamilton-Oravetz

Waiting for Couture
Frank Oravetz

NEW GALLERY IN CLOVERDALE TOWERS GALLERY

Cloverdale boasts a brand new gallery called Towers Gallery after the towers of the three-story Victorian house where it is located. The gallery features two- and three-dimensional fine art and wearable art, as well as antiques. Riverfront member, Cathy Thomas, is Artistic Director.

Riverfront Art Gallery members, Craig Melville, Bill Hollister, Stephanie Hamilton-Oravetz, Frank Oravetz, and Jerrie Jerné will be at Towers Gallery along with other artists in a show that runs through Oct. 31st.

Towers Gallery is at 240 North Cloverdale Blvd, Suite 2, and is open weekends only. Friday and Saturday, 11:00-8:00; Sunday, 11:00-7:00. (707) 894-4331.

Mark Lifvendahl

j27 Gallery at 2728 J St.
Sacramento, CA 95816
Saturday, Aug. 13 only, 11 am-7 pm

